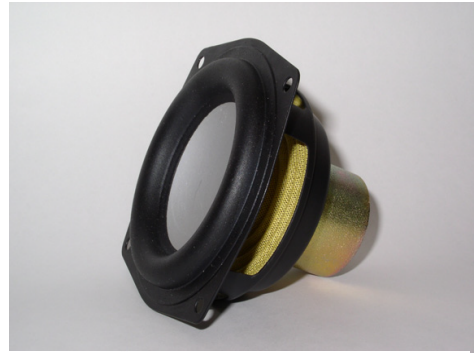
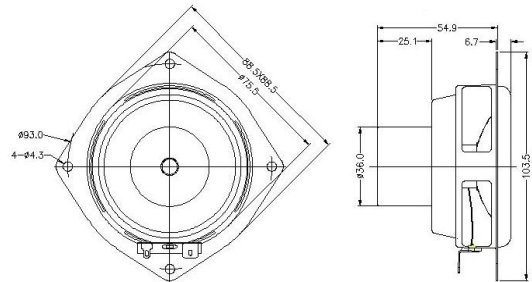


3 inch Loudspeaker

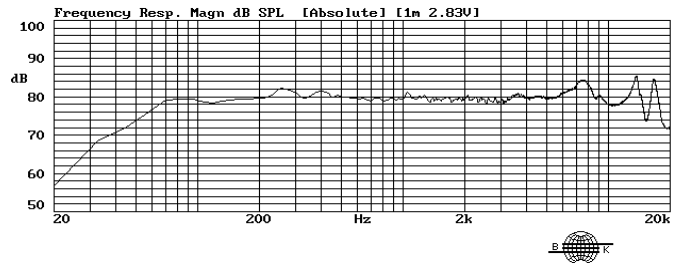
- **High Excursion**
- **Low Distortion**
- **No Stray Magnetic Fields**



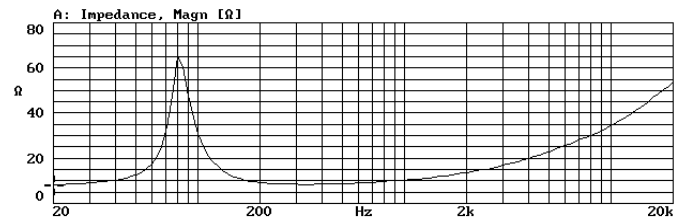
Nominal Diameter 3 inches (70 mm)
 Nominal Impedance (Z) 8 Ohms
 Sensitivity, 1W/1m (E) 80 dB @ 1 kHz
 Power Capacity, RMS (Pe) 20 W
 Power Capacity, Peak 80 W
 Frequency Range (-10dB) Fo - 15 kHz
 Minimum Impedance 8 ohms
 Voice Coil Diameter 19.3 mm
 Voice Coil Winding Length (h) 6.5 mm
 Voice Coil Number of Layers (n) 4
 Voice Coil Former Material Kapton
 Voice Coil Wire Composition CCAW
 Magnetic Material Neodymium radial
 Stray Flux Shielding Inherent
 Magnetic Gap Depth (He) 12.7 mm
 Cone Material Aluminum
 Surround Material Rubber
 Polarity, Outward Motion Positive voltage on (+) tab
 Net Weight 216 g
 Maximum Excursion 20 mm peak to peak



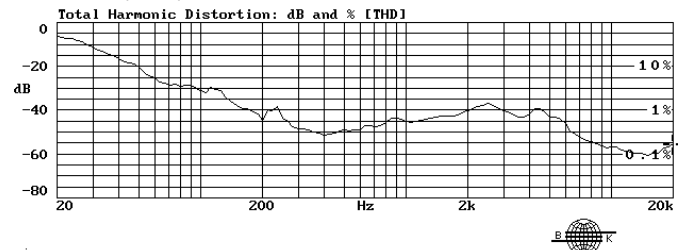
Frequency Response (1W, 1m)



Impedance



Distortion (1W,1m)



Thiele / Small Parameters

Resonant Frequency (Fo) - Fs 80 Hertz
 Voice Coil DC Resistance - Re 7.6 Ohms
 Total Q - Qts 0.67
 Mechanical Q - Qms 8.0
 Electrical Q - Qes 0.73
 Equivalent Volume of Air - Vas 1.25 L
 Radiating Piston Area - Sd 31 cm²
 Xmax 10 mm peak to peak

Electrical / Mechanical Parameters

Flux Density x Length - BL 4.7 Tesla-meters
 Compliance - Cms 920 μm/N
 Total Mass - Mms 4.3 grams